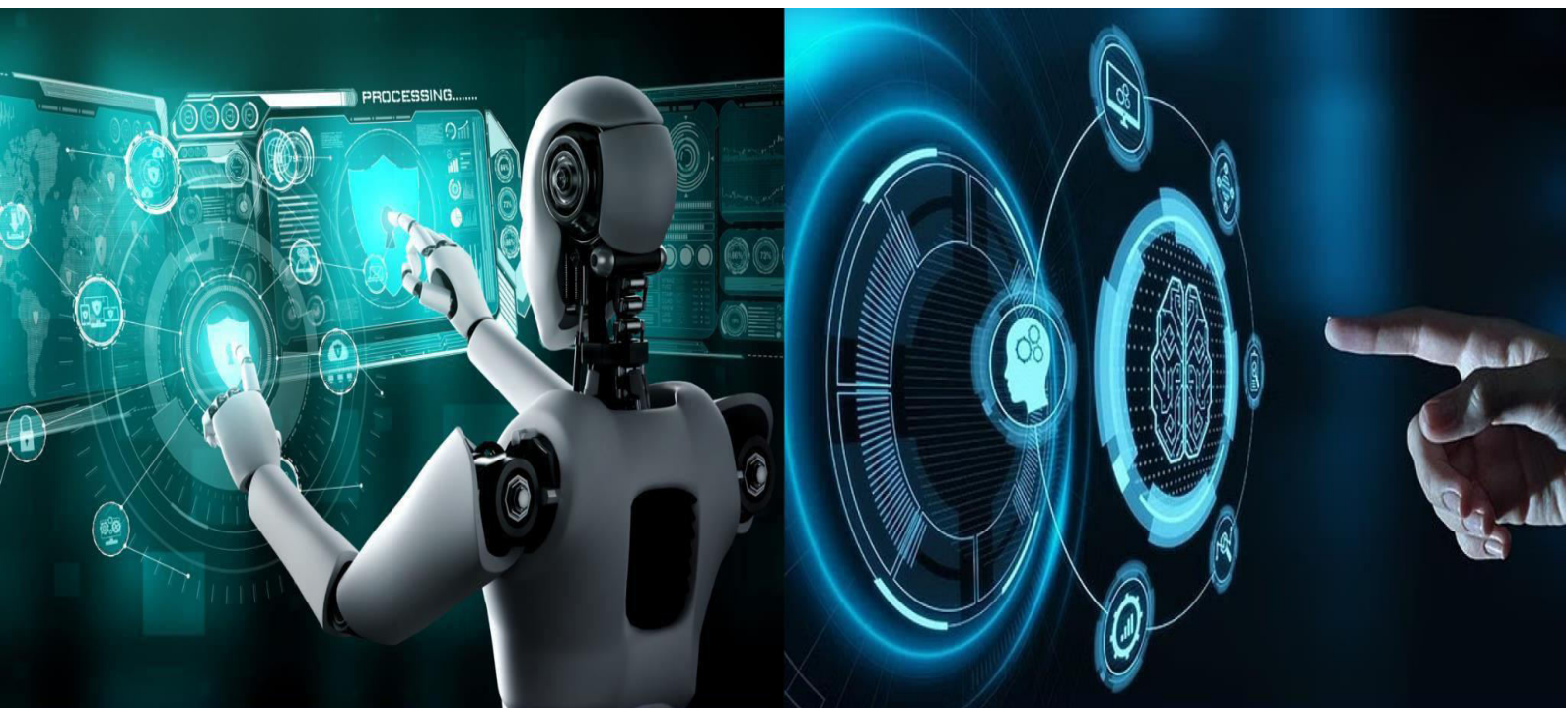




# International Journal of Innovative Research in Computer and Communication Engineering

(A Monthly, Peer Reviewed, Refereed, Scholarly Indexed, Open Access Journal)





## International Journal of Innovative Research in Computer and Communication Engineering (IJIRCCCE)

(A Monthly, Peer Reviewed, Refereed, Scholarly Indexed, Open Access Journal)

# Multimedia Kiosk for E-Commerce Inventory Management

Harshini R, Dr Malatesh S H, Hameema Zain, Jayashree P B, Sandhya V N

Project Head, Dept. of Computer Science and Engineering, MS Engineering College, Bengaluru, Karnataka, India

Professor & HOD, Dept. of Computer Science and Engineering, MS Engineering College, Bengaluru, Karnataka, India

Student, Dept. of Computer Science and Engineering, MS Engineering College, Bengaluru, Karnataka, India

Student, Dept. of Computer Science and Engineering, MS Engineering College, Bengaluru, Karnataka, India

Student, Dept. of Computer Science and Engineering, MS Engineering College, Bengaluru, Karnataka, India

**ABSTRACT:** This study investigates the integration of multimedia kiosks within e-commerce inventory management systems. The research focuses on how automated interfaces can synchronize real-time data between physical kiosk locations and centralized digital inventories. Using various analytical frameworks, the study evaluates the efficiency of stock updates, user interaction data, and supply chain responsiveness.

**KEYWORDS:** Multimedia kiosk, e-commerce, inventory management, real-time data, automation.

## I. INTRODUCTION

The Multimedia Kiosk for E-Commerce Inventory Management is designed as a practical, interactive, and cost-effective solution to overcome these difficulties. A multimedia kiosk combines hardware such as a touchscreen display, barcode or RFID reader, speakers, and a processing unit to provide an all-in-one platform for managing inventory. Unlike traditional computer interfaces, kiosks are simple, intuitive, and require minimal training, making them accessible to users with limited technical knowledge.

This project focuses on developing a kiosk that not only scans and identifies products but also retrieves and displays product information through rich multimedia elements such as text, images, videos, and voice output. By integrating a real-time database, the kiosk ensures that stock updates are instant, accurate, and synchronized with the backend system or e-commerce platform. The system also features automated low-stock alerts, reducing the risk of running out of essential products.

The proposed kiosk offers a streamlined workflow where users simply scan a product, view its details, update quantities, and receive automatic confirmation or alerts. This reduces manual paperwork, eliminates calculation errors, and significantly improves the speed of inventory handling. Such a system is especially useful in supermarkets, retail stores, warehouses, libraries, pharmacies, and e-commerce fulfillment centers.

Furthermore, the multimedia capability of the kiosk enhances user engagement and clarity. Visual product displays help reduce confusion between similar products, while voice prompts improve accessibility for users who may not be comfortable reading detailed text on the screen. This makes the system suitable for a diverse range of users, including those with limited literacy or older staff members.

The project aims to develop an interactive multimedia kiosk capable of scanning product barcodes or RFID tags, fetching product details from a database, and displaying relevant information such as stock quantity, price, and product images. Users can update stock directly through the kiosk using a simple touchscreen interface. The system also provides audio feedback and low-stock alerts, ensuring timely restocking and error-free data updates. The kiosk can be locally connected or linked with e-commerce platforms to synchronize inventory changes in real time, making it suitable for small shops as well as large warehouses.



## International Journal of Innovative Research in Computer and Communication Engineering (IJIRCCCE)

(A Monthly, Peer Reviewed, Refereed, Scholarly Indexed, Open Access Journal)

### II. METHODOLOGY

#### 1. System Analysis & Requirements Gathering

This initial phase defines the "brain" and "senses" of the kiosk. For hardware, you must select commercial-grade components—like an Industrial PC or high-performance Raspberry Pi—to handle constant use without overheating. Software analysis focuses on the tech stack, often choosing between Windows IoT, Android, or Linux based on the required peripheral compatibility. The data flow acts as the nervous system, mapping how a barcode scan travels from the physical reader to the backend API for a database lookup, then triggers a stock decrement and finally updates the user interface in milliseconds.

#### 2. System Design: UI, Database, and Workflow

Design turns requirements into a blueprint. The UI layout must be "touch-first," featuring large, high-contrast buttons and a minimalist flow to prevent user frustration. The database structure typically follows a relational model, with linked tables for Products, Inventory Logs, and User Transactions to maintain data integrity. The workflow is then mapped using state diagrams, defining exactly what happens during "Idle," "Scanning," "Payment," and "Error" states to ensure the system never gets stuck in an infinite loop.

#### 3. Hardware Setup & Peripheral Integration

Physical setup is more than just assembly; it's about environment-proofing. The touchscreen must be calibrated for precise input, and the barcode scanner is often mounted at a downward angle to prevent glare from overhead retail lighting. Peripherals like thermal receipt printers and card readers are connected via secure, internal USB or Serial ports. High-quality enclosures are used to protect these components from dust, humidity, and tampering in high-traffic public areas.

#### 4. Software Development: Modules and Logic

Development is usually split into three core modules: the Frontend (the visual interface), the Backend (the logic engine), and the Database (the memory). Developers use "Atomic Updates" in the code to ensure that if two people scan the last item at different kiosks simultaneously, the stock count doesn't fall into a negative value. Modern kiosks also utilize "Application Sandboxing" to keep the kiosk software isolated from the rest of the operating system for security.

#### 5. Integration: Merging the Modules

During integration, the individual modules are stitched together to form a cohesive unit. The scanning module is linked to the multimedia display so that scanning a specific item can trigger a relevant product video or advertisement.

#### 6. Rigorous Testing & Quality Assurance

Testing is the most critical safeguard before deployment. "Unit testing" checks individual features like the scanner's accuracy, while "Integration testing" ensures the stock updater correctly triggers low-stock alerts.

#### 7. Deployment: Installation and Hardening

The final stage is moving the kiosk to its permanent home. The software is locked into "Kiosk Mode," a specialized OS state that prevents users from exiting the app to access the desktop or files. Startup scripts are configured so the system automatically boots the application on power-up.

### III. REQUIREMENTS

#### Functional Requirements

##### System Analysis:

This phase identifies the "brain" and "senses" of the kiosk to ensure it can handle the rigors of a warehouse or retail environment. Mapping the journey from a physical scan to a database update. The system must handle Input (Scan/Touch) → Logic (API Validation) → Output (UI Update/Database Sync)



## International Journal of Innovative Research in Computer and Communication Engineering (IJIRCCCE)

(A Monthly, Peer Reviewed, Refereed, Scholarly Indexed, Open Access Journal)

### System Design:

Design translates your requirements into a blueprint for developers and hardware engineers. Defining the logic for stock updates—ensuring that if a user scans a product, the system automatically checks current levels and prompts for "Add/Subtract" actions.

### Hardware Setup:

This stage focuses on the physical assembly and "hardening" of the kiosk. Implementing a dual-connection strategy (Ethernet for primary, Wi-Fi for backup) to maintain the "real-time" requirement.

### Software Development:

The actual coding phase where the kiosk's features come to life.

└ **Frontend Module:** Developing the multimedia components to handle high-resolution images and optional audio prompts for accessibility.

└ **Backend Module:** Building the Role-Based Access Control (RBAC) logic and secure API endpoints for inventory updates.

└ **Cloud Logic:** Writing the synchronization scripts that ensure local kiosk data matches the central e-commerce server data every few seconds.

### Integration:

Integration ensures that the hardware and software act as a single, cohesive unit. Linking stock levels to visual cues—for example, a red border appearing around a product image if stock is below 10 units.

### Testing:

Before deployment, the system must be pushed to its limits to ensure reliability.

- **Functional Testing:** Verifying that a scan correctly updates the central database and triggers a "Low Stock" alert.
- **Stress Testing:** Scanning 50+ items in rapid succession to ensure the software doesn't lag or crash.
- **Connectivity Testing:** Simulating a "Server Down" scenario to ensure the kiosk provides a clear error message and stores data locally until the connection is restored.

### Deployment:

The final rollout phase where the kiosk goes live in the field. Providing staff with a "Quick Start Guide" on how to perform stock takes, generate daily reports, and troubleshoot common scanner errors.

### Non-Functional Requirement

The non-functional requirements of the Multimedia Kiosk for E-commerce Inventory Management system ensure that the application performs efficiently, securely, and reliably under various operating conditions. The system must provide high performance with fast response times, ensuring that product searches, barcode scans, and inventory updates are displayed within a few seconds.

### Use Case:

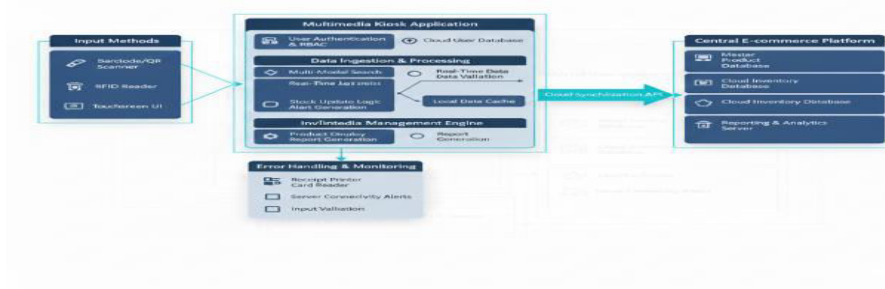


Fig 1. Use Case diagram



## International Journal of Innovative Research in Computer and Communication Engineering (IJIRCCCE)

(A Monthly, Peer Reviewed, Refereed, Scholarly Indexed, Open Access Journal)

### System Architecture:

System architecture describes the overall structure of a system, showing how different components work together to perform the required functions. It typically includes layers such as the user interface, application logic, database, and external device modules. Each layer has a specific role for example, the UI handles user interaction, the application layer processes operations, and the database stores inventory data. The architecture also includes network communication to sync data with cloud servers, ensuring smooth, efficient, and reliable operation of the system.



Fig 2. System Architecture

### Data Flow:

The Data Flow Diagram (DFD) represents how data moves within the multimedia kiosk inventory system. Users interact with the touchscreen kiosk to search products, scan items, or update stock information. The kiosk interface sends these inputs to the inventory manager module, which processes the data and applies the required business logic. This processed data is then stored or retrieved from the central database, which holds records of products, stock levels, and transactions. The updated information is finally synchronized with the e-commerce platform to maintain real-time inventory accuracy across all sales channels.

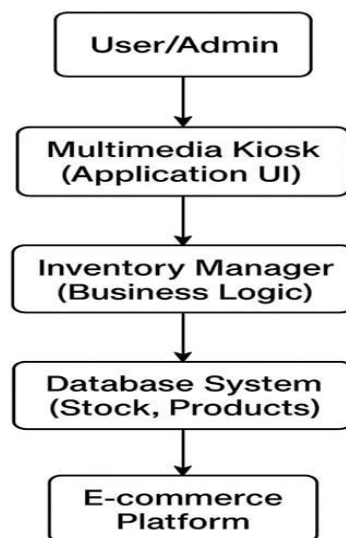


Fig 3. Data Flow



## International Journal of Innovative Research in Computer and Communication Engineering (IJIRCCCE)

(A Monthly, Peer Reviewed, Refereed, Scholarly Indexed, Open Access Journal)

### Sequence Diagram:

The sequence diagram shows the step-by-step interaction between the user and the system during inventory operations. The process begins when the user performs an action such as searching for a product, scanning an item, or updating stock details on the kiosk. The kiosk then sends this request to the inventory manager, which processes the logic and communicates with the database to retrieve or update inventory records. The database returns the appropriate data back to the inventory manager, which sends the final output to the kiosk interface. The kiosk then displays the updated information to the user, completing the interaction. This sequence ensures smooth, real-time processing within the inventory management system.

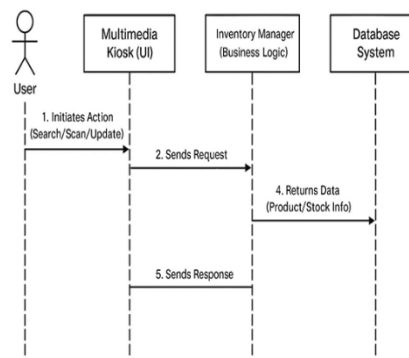


Fig 4. Sequence diagram

### IV. SYSTEM IMPLEMENTATION:

System implementation refers to the process of developing and deploying the multimedia kiosk for e-commerce inventory management, integrating both hardware and software components to create a fully functional system. It involves designing the user interface to be intuitive and interactive, developing backend modules for inventory tracking, order processing, and payment handling, and integrating necessary peripherals like barcode scanners and payment terminals.

#### System Testing:

System testing is a crucial phase in the development of the multimedia kiosk for e-commerce inventory management. It ensures that all components—hardware, software, and network—work together seamlessly and that the system delivers the intended functionality, reliability, and user experience. The goal is to detect and correct defects before deployment, protecting the user and business against failures in real-world scenarios.

#### Unit Testing:

Unit testing is performed to verify that individual modules, such as the inventory management, order processing, and UI modules, function correctly in isolation. Each method or piece of code is tested separately to guarantee it processes inputs and outputs as expected.

#### Integration Testing:

Integration testing examines how different modules of the kiosk system interact with each other. For example, it ensures that the barcode scanning module correctly shares data with the inventory tracking system and that the payment gateway communicates seamlessly with the order processing module.

#### System Testing:

System testing evaluates the complete multimedia kiosk system in an environment that simulates actual operating conditions. This type of testing looks at the entire workflow, including hardware and software integration, touch-screen responsiveness, database synchronization, and real-time inventory updates.



## International Journal of Innovative Research in Computer and Communication Engineering (IJIRCCCE)

(A Monthly, Peer Reviewed, Refereed, Scholarly Indexed, Open Access Journal)

### User Acceptance Testing:

User acceptance testing (UAT) is conducted with real users to ensure that the kiosk's features meet user needs in practice. During this test, stakeholders interact with the kiosk to verify usability, accuracy of inventory classification, and overall satisfaction.

## V. RESULTS

**Home Page:** The Home Screen is the starting point of the multimedia kiosk system. It is the first screen that appears when the kiosk is powered on and serves as the central hub for navigating through the system's features.



Fig 5.1 Home Screen

**The Product Scanner:** The Product Scanner is one of the most important components of the Multimedia Kiosk for E-Commerce Inventory Management. It is responsible for identifying products quickly and accurately, ensuring that the kiosk retrieves the correct information from the inventory database.



Fig 5.2 Product Scanner

**The Inventory Item Selection:** The Inventory Item Selection Panel is an important part of the kiosk interface that allows users to browse and choose products from the available inventory list without scanning. This panel provides a convenient alternative for situations where the barcode or RFID tag is not available, damaged, or when the user wants to quickly check the details of a product manually. It displays all items stored in the inventory database in a structured format.



## International Journal of Innovative Research in Computer and Communication Engineering (IJIRCCCE)

(A Monthly, Peer Reviewed, Refereed, Scholarly Indexed, Open Access Journal)



Fig 5.3 Inventory Item Selection Panel

**The Stock Update:** The Stock Update screen on a multimedia kiosk allows store staff or authorized personnel to manage inventory in real time. It provides an interactive interface for adding or removing stock items, ensuring that the e-commerce platform reflects accurate product availability.



Fig 5.4: Stock Update Screen

The Stock Update screen on a multimedia kiosk allows staff or authorized personnel to manage inventory in real time, ensuring the e-commerce platform reflects accurate product availability. It provides a simple, interactive interface for updating stock quantities.

- **Red LED:** Indicates stock is empty or critically low. Immediate attention required.
- **Green LED:** Indicates stock is full or at optimal levels. No immediate action needed.

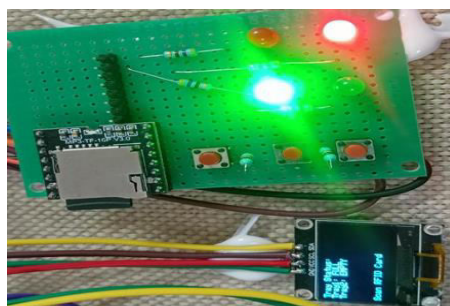


Fig 5.5: Low Stock & Full Stock Indicators

**Result:** The Item Dispense screen confirms that an item has been successfully dispensed from the kiosk or automated inventory system. It ensures that the physical product has been released and the inventory system reflects the change. Example: “Item Dispensed Successfully”



## International Journal of Innovative Research in Computer and Communication Engineering (IJIRCCCE)

(A Monthly, Peer Reviewed, Refereed, Scholarly Indexed, Open Access Journal)

Audio Feedback

- Sound alerts when an item is dispensed successfully

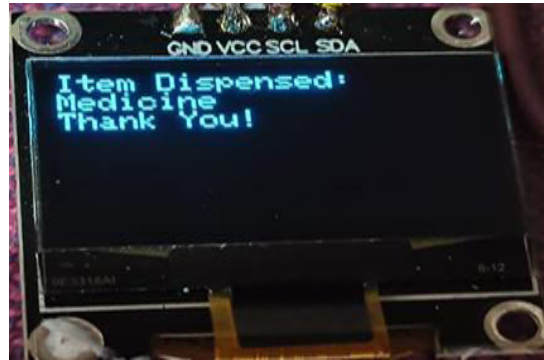


Fig 5.6 Result



Fig 5.7: Graphical Representation

## VI. CONCLUSION

The Multimedia Kiosk for E-Commerce Inventory Management successfully demonstrates a smart, interactive, and user-friendly solution for managing inventory in retail stores, supermarkets, warehouses, and e-commerce fulfillment centers. By integrating a touchscreen interface, barcode/RFID scanning, multimedia display, and automated stock updating, the system eliminates the limitations of traditional manual methods.

It provides faster product identification, accurate data retrieval, and real-time stock updates, greatly reducing human errors and improving operational efficiency.

The kiosk's multimedia capabilities—such as displaying product images, playing videos, and providing voice assistance—enhance user engagement and make the system accessible even to non-technical staff.

The low-stock alert feature ensures timely replenishment, preventing out-of-stock situations and improving business continuity. Overall, the system provides a modern, automated, and reliable approach to inventory management, demonstrating its potential to be deployed in real-world retail and warehouse environments.

The system's real-time data update capability ensures that the inventory database remains accurate and up-to-date, which is essential for maintaining seamless operations in retail and warehouse settings. By reducing manual effort and human errors, the kiosk supports better decision-making and smoother workflow.



## International Journal of Innovative Research in Computer and Communication Engineering (IJIRCCE)

(A Monthly, Peer Reviewed, Refereed, Scholarly Indexed, Open Access Journal)

Furthermore, the project showcases the feasibility of using cost-effective hardware and simple software tools to build a reliable inventory management system. It highlights the potential of embedded programming (C language) combined with multimedia technologies to create scalable and practical solutions.

### VII. FUTURE SCOPE

The Multimedia Kiosk for E-Commerce Inventory Management can be expanded into a highly advanced and intelligent system with numerous future enhancements.

One major improvement is full cloud integration, allowing inventory data to be updated instantly across multiple store locations, warehouses, and online platforms, ensuring accurate stock levels at all times.

The system can also be extended with a dedicated mobile application that enables real-time monitoring, remote approval of stock changes, instant low-stock alerts, and notifications directly to store managers.

Incorporating Artificial Intelligence and Machine Learning will allow the kiosk to analyze product trends, forecast demand, recommend optimal reorder levels, and help businesses avoid both overstocking and stock-outs.

The kiosk can also be upgraded with voice command functionality, making it fully hands-free and accessible for users with limited technical experience.

### REFERENCES

1. Sen, J. (2012). RFID-based inventory management systems. *International Journal of Computer Science and Network Security*, 12(1), 75–87.
2. Doran, R. C. (2005). Barcode and RFID technology overview. *IEEE Communications Magazine*, 43(4), 22–27.
3. Interaction Design Foundation. (2023). Touchscreen user interface design principles. <https://www.interaction-design.org>
4. Investopedia. (2023). Inventory management: Meaning and importance.
5. RFID Journal. (2023) Introduction to RFID technology. <https://www.rfidjournal.com>
6. Flask Software Foundation. (2023). Flask framework documentation.
7. SQLite Consortium. (2023). SQLite documentation
8. Dr. Malatesh S H., S. Kattimani, P.Pallabavi, V. A. P., and D. M. G., “Intruder Detection and Protection System,” *International Journal of Innovative Research in Technology (IJIRT)*, vol. 11, no. 12, p.6287. May 2025, ISSN: 2349-6002.



INTERNATIONAL  
STANDARD  
SERIAL  
NUMBER  
INDIA



# INTERNATIONAL JOURNAL OF INNOVATIVE RESEARCH

IN COMPUTER & COMMUNICATION ENGINEERING



9940 572 462



6381 907 438



ijircce@gmail.com



[www.ijircce.com](http://www.ijircce.com)

Scan to save the contact details