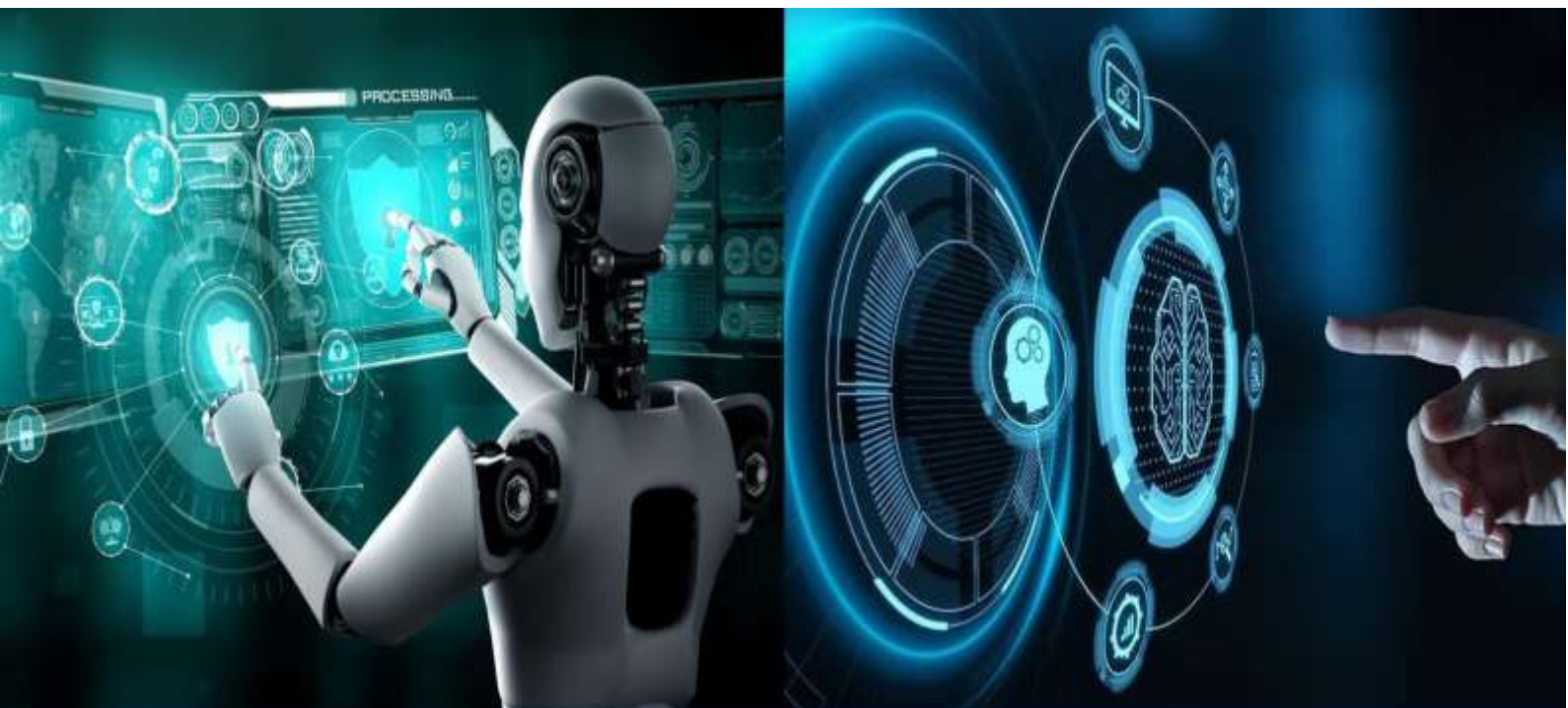


International Journal of Innovative Research in Computer and Communication Engineering

(A Monthly, Peer Reviewed, Refereed, Scholarly Indexed, Open Access Journal)



Impact Factor: 8.771

Volume 14, Issue 1, January 2026



A Voice-Driven, Vision-Aware Smart Rover for Assistive, Industrial, and Educational Automation

Laxmi Narayan Singh¹, Shivam Prasad¹, Sneha Padma Kumar¹, Yasrin Parween¹, Dr. Malatesh S H²

Student, Dept. of Computer Science and Engineering, MS Engineering College, Bengaluru, Karnataka, India¹

Professor & HoD, Dept. of Computer Science and Engineering, MS Engineering College, Bengaluru, Karnataka, India²

ABSTRACT: This project, titled "A Voice-Driven, Vision-Aware Smart Rover for Assistive, Industrial, and Educational Automation," aims to design and develop an intelligent robotic system that synergistically integrates voice control, computer vision, and autonomous navigation to create a versatile and accessible platform. The core objective is to enable intuitive, handsfree operation of a robotic vehicle through natural language commands while ensuring safe and context-aware movement in real-world environments. The system architecture is built around a multi-layered control framework. At the user interface level, a custom Android mobile application captures spoken commands through the device's microphone. Utilizing Google's Speech Recognition API, the application converts audio input into text, which is then parsed and wirelessly transmitted to the robotic rover via a Bluetooth (HC-05) module. On the hardware side, an Arduino Nano microcontroller serves as the central processing unit, decoding received commands and executing corresponding actuation routines. Movement is achieved through DC motors driven by an L298N motor driver, allowing precise directional control (forward, backward, left, right) based on voice input. To enhance operational safety and autonomy, the rover is equipped with an ultrasonic sensor (HCSR04) for real-time obstacle detection. A significant innovation of this project is the integration of vision-based intelligence. A mounted camera module continuously captures the rover's surroundings, and an embedded computer vision pipeline performs real-time traffic sign detection and classification. Detected signs are processed, and relevant auditory alerts are generated using a text-to-speech (TTS) system, providing the user with enhanced environmental awareness and making the system suitable for applications in structured environments like campuses or warehouses. The project implements a sophisticated hybrid control system that seamlessly blends manual voice control with autonomous sensor-driven decision-making. This fusion of data from voice commands, camera input, and ultrasonic sensors enables intelligent, context-sensitive navigation, where the rover responds to user intent while proactively avoiding hazards. This project delivers a robust, scalable, and multimodal robotic system that demonstrates the practical convergence of the Internet of Things (IoT), Artificial Intelligence (AI), and Robotics. It lays a foundation for future expansions, including integration with GPS for navigation, cloud connectivity for advanced analytics.

KEYWORDS: Voice-Controlled Robotics, Computer Vision, Autonomous Navigation, IoT, Human-Robot Interaction, Embedded Systems

I. INTRODUCTION

The ongoing evolution of intelligent robotic systems marks a significant advancement in the integration of automated platforms within diverse operational environments, leading to the development of various autonomous vehicles, including robotic rovers that are capable of navigating through complex and dynamic spaces with minimal human oversight. In recent years, there has been a pronounced increase in interest and research focused on the development of voicecontrolled robotic systems. These systems are designed to be operated using natural spoken language commands instead of relying on conventional controllers or manual interfaces, thereby creating a more intuitive and accessible mode of interaction. Voice-controlled robotic platforms offer a multitude of advantages, chief among them being enhanced ease of use, improved accessibility, and the facilitation of hands-free operation. These attributes render such systems especially valuable for a wide range of applications, including providing support for individuals with physical disabilities, assisting industrial operators in scenarios where their hands are occupied with other tasks, and enriching educational contexts where experiential and interactive learning is prioritized. The specific objective of this project, entitled "A Voice-Driven, Vision-Aware Smart Rover for Assistive, Industrial, and Educational Automation," is to design, develop, and implement an advanced intelligent robotic vehicle that not only responds accurately and efficiently to voice commands but also incorporates real-time computer vision to achieve a heightened level of environmental awareness and contextual understanding. This comprehensive system is built around an Arduino microcontroller, which



International Journal of Innovative Research in Computer and Communication Engineering (IJIRCCCE)

(A Monthly, Peer Reviewed, Refereed, Scholarly Indexed, Open Access Journal)

functions as the central processing unit, orchestrating all operations and coordinating between various subsystems. Complementing the microcontroller is a Bluetooth module that establishes a reliable wireless communication link, enabling seamless transmission of commands from a user interface to the rover. Furthermore, an ultrasonic sensor is integrated to provide continuous obstacle detection capabilities, ensuring that the vehicle can navigate safely by identifying and responding to physical barriers in its path. Perhaps most distinctively, the system includes a camera module dedicated to visual input processing; this component supports real-time detection and classification of environmental cues such as traffic signs, thereby forming a holistic vision-aware navigation framework that merges sensory perception with interactive control. A Voice-Driven, Vision-Aware Smart Rover for Assistive, Industrial and Educational Automation The robotic car will be able to move in different directions, such as forward, backward, left, and right, based on voice commands given by the user. The system will consist of three main components: the voice recognition module, the Arduino board, and the motor driver circuit. The voice recognition module will be used to convert the voice commands into electrical signals, which will then be processed by the Arduino board to control the movement of the robotic car. The motor driver circuit will be used to drive the motors of the robotic car in the desired direction based on the signals received from the Arduino board. It also contains an ESP32 Camera that is used to detect the Traffic Signals and will stop the motor if red light is detected and starts moving if green light is detected. The execution of this project follows a methodical, multi-stage approach that encompasses several critical phases. Initially, the design and physical construction of the robotic chassis are undertaken, focusing on structural integrity, mobility, and accommodation of all electronic components. Subsequently, the Arduino board is programmed to manage motor control algorithms, interpret sensor data, and integrate inputs from the communication and vision modules. In parallel, a dedicated Android application is developed, incorporating speech-to-text functionality through established APIs to accurately capture and convert user voice commands into executable instructions. Additionally, a computer vision pipeline is implemented to process live video feed from the onboard camera, applying image recognition techniques to identify and classify visual markers in the environment. These diverse elements are unified within a hybrid control architecture that harmonizes manual voice-directed operation with autonomous features such as obstacle avoidance and visual interpretation, thereby ensuring that the system remains both responsive to user intent and inherently safe in dynamic settings. Upon completion of the assembly and programming phases, the integrated system will undergo extensive testing across a variety of simulated and real-world environments to rigorously evaluate its performance. Key metrics under assessment will include the accuracy of voice recognition, the reliability of obstacle detection and avoidance mechanisms, the precision of sign classification via the vision module, and the overall responsiveness and stability of the system during operation. The anticipated outcomes of this project are expected to convincingly demonstrate the feasibility, adaptability, and practical utility of voice-driven, vision-enabled robotic platforms, thereby highlighting their potential for deployment across multiple sectors. In the domain of assistive technology, the rover could function as a mobility aid or manipulation tool for individuals with limited motor functions, granting them greater independence. Within industrial applications, the system could enhance efficiency in material handling, quality inspection, and logistical operations by enabling voice-directed control in environments where manual intervention is either impractical or hazardous. In educational settings, the platform serves as an engaging, hands-on tool for students to explore interdisciplinary concepts in robotics, artificial intelligence, embedded system design, and human-computer interaction, thereby fostering both theoretical knowledge and practical skills. This project is situated at the intersection of several contemporary technological advancements, including the Internet of Things, artificial intelligence, sensor fusion, and adaptive automation. By effectively bridging human speech with robotic action and augmenting the system with perceptual intelligence, the work contributes meaningfully to the broader progression of smart, interactive robotic solutions. It presents a scalable and adaptable framework that not only addresses immediate functional requirements but also opens avenues for future enhancements, such as integration with GPS for navigational accuracy, connectivity with cloud-based analytics for advanced data processing, and expansion to support additional interaction modalities like gesture recognition. Ultimately, this initiative seeks to deliver a robust, versatile, and practical robotic platform that supports innovation and positive impact across assistive, industrial, and educational landscapes.

II. LITERATURE SURVEY

Evolution of Robotic Control Systems - Traditional robotic systems relied on manual input devices such as joysticks, remote controls, or pre-programmed scripts, which limited accessibility and required physical interaction. Recent advancements have shifted toward more intuitive interfaces, including voice and gesture control, to enhance usability and inclusivity, especially for users with physical limitations or in hands-free operational environments. • Voice-Controlled Robotics - The integration of voice recognition in robotics has been widely explored to create hands-free



International Journal of Innovative Research in Computer and Communication Engineering (IJIRCCCE)

(A Monthly, Peer Reviewed, Refereed, Scholarly Indexed, Open Access Journal)

and natural human-robot interaction. Systems typically employ speech-to-text conversion tools, such as Google's Speech Recognition API, to interpret user commands. These commands are then transmitted wirelessly—often via Bluetooth—to a microcontroller, which executes corresponding actions. Prior studies highlight the effectiveness of voice control in assistive devices, educational robots, and industrial automation, demonstrating improved accessibility and operational efficiency.

- **Autonomous Navigation and Obstacle Avoidance** - Autonomous navigation in robotics commonly utilizes ultrasonic sensors, infrared sensors, or LiDAR for real-time obstacle detection. The HC-SR04 ultrasonic sensor, noted in the project proposal, is frequently used in Arduino-based projects for distance measurement due to its low cost and reliability. Research shows that integrating sensor-based autonomy with manual control creates a hybrid system that enhances safety without compromising user control, aligning with the project's objective of implementing a responsive obstacle avoidance mechanism.

- **Hybrid Control Architectures** - Recent robotic designs emphasize hybrid control systems that combine user input with autonomous decision-making. This approach, referred to in the project as a "hybrid control system," fuses data from multiple sources—voice commands, ultrasonic sensors, and camera input—to enable intelligent and context-sensitive navigation. Literature supports that such architectures improve reliability and adaptability, making robots suitable for dynamic and unstructured environments.

- **Applications in Assistive, Industrial, and Educational Domains** - Studies illustrate the growing application of voice-driven and vision-aware robots across sectors: In assistive technology, such systems enhance independence for individuals with mobility or dexterity impairments by enabling voice-controlled mobility aids. In industrial automation, voice-operated robots optimize tasks like material handling, inspection, and logistics, reducing manual labor and operational risks. In education, robotic platforms serve as interactive tools for teaching robotics, programming, AI, and IoT concepts, making STEM learning more engaging and accessible.

- **Technological Integration and System Design** - The convergence of IoT, AI, and embedded systems cost-effective robotic platforms. Projects commonly employ microcontrollers like Arduino or Raspberry Pi, motor drivers (e.g., L298N), and wireless modules (e.g., HC-05 Bluetooth) to create modular and scalable systems. The proposed project follows this trend, utilizing an Arduino Nano as the central controller and integrating multiple sensors and communication modules to achieve its multifunctional objectives.

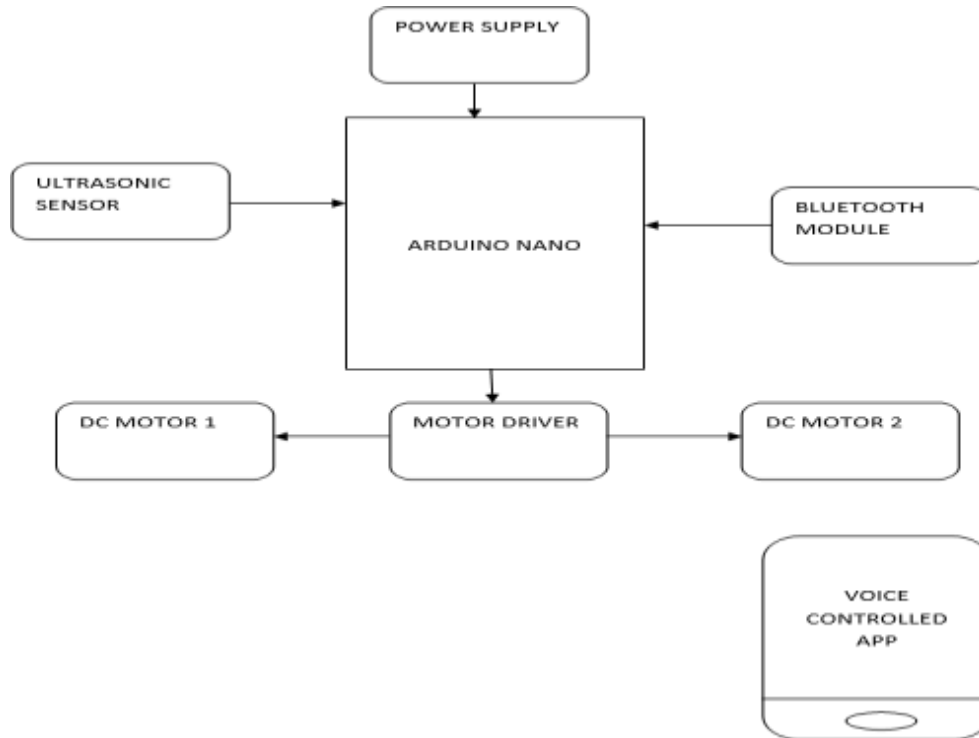
- **Evaluation Metrics and Performance Assessment** - Prior research underscores the importance of evaluating system performance through metrics such as voice recognition accuracy, sensor response time, obstacle detection reliability, and vision processing accuracy. The project proposal similarly outlines plans for real-world testing to assess these parameters, ensuring that the system meets practical usability and safety standards before deployment.

- **Future Directions and Scalability** - Literature often notes that voice- and vision-enabled robotic platforms are designed with extensibility in mind. Future enhancements may include GPS integration for navigation, cloud connectivity for data logging and analytics, and support for additional interaction modes like gesture or facial recognition. The proposed project aligns with this forward-looking approach by incorporating a scalable architecture that allows for future upgrades and expanded functionality.

- **Conclusion from Reviewed Works** - The synthesis of existing research confirms the viability and relevance of developing a voice-driven, vision-aware robotic rover. Such systems represent a meaningful advancement in human-robot interaction, offering practical solutions for accessibility, automation, and education while adhering to principles of safety, usability, and adaptive design.



III. SYSTEM ARCHITECTURE



IV. METHODOLOGY / APPROACH

Use an Android application to capture the user's voice through the phone's microphone.

- In the app, convert the user's spoken commands into text using Google's speech-recognition API.
- Through Bluetooth, send the recognized voice-command text from the Android phone to the car's microcontroller.
- Inside the car, a Bluetooth module (like HC-05) receives the command string and passes it to the microcontroller (Arduino Nano).
- The Arduino Nano (running at 16 MHz with 32 KB flash, 2 KB RAM, and 1 KB EEPROM) decodes the command.
- Use the UART (serial) communication protocol for the Arduino to communicate with the Bluetooth module
- Based on the decoded command ("go forward", "go back", "turn left", "turn right"), the microcontroller generates the corresponding control signals.
- The control signals drive a motor driver circuit that controls the directional motion (polarity and speed) of the two DC motors.
- Power the entire circuit (Arduino, motor driver, motors) using a 12 V rechargeable battery
- Design the software in the Arduino so that it continually listens for incoming Bluetooth text commands and simultaneously drives the motors depending on the command.
- Implement error-checking / filtering in the Arduino program to ignore unrecognized or noisy inputs so the car doesn't act unpredictably.

V. RESULTS & DISCUSSION

Capture human voice via an Android smartphone microphone and convert it into English text using speech-to-text within the mobile app.

- Transmit the interpreted command wirelessly from the mobile app to the robotic car via Bluetooth for real-time control.
- On the robotic car side, decode the received Bluetooth commands using a microcontroller and drive DC motors through a motor-driver module to move forward, backward, turn left or right.



International Journal of Innovative Research in Computer and Communication Engineering (IJIRCCE)

(A Monthly, Peer Reviewed, Refereed, Scholarly Indexed, Open Access Journal)

- Incorporate an ultrasonic sensor system on the robotic car to detect obstacles and enable automatic stopping or redirection for safe autonomous navigation.
- Combine manual voice-based control with autonomous obstacle-avoidance logic to create a hybrid control system that responds to user commands and sensor inputs
- Mount a camera on the robotic car, perform real-time traffic-sign detection and classification, and provide voice alerts via text-to-speech for enhanced awareness.
- Fuse data from the voice-control input, camera-based sign detection, and ultrasonic sensor outputs, enabling intelligent decision-making for synchronized and safe operation.
- Conduct real-world performance testing to evaluate voice-recognition accuracy, traffic- sign detection precision, sensor reliability, and the system's overall reaction and safety performance.
- Provide a hands-free, user-friendly interface through voice control—making the system accessible for applications in hazardous or inaccessible environments, or as assistive technology for differently-abled users.
- Design the system with future expansion in mind—enabling multimodal interaction (e.g., gesture or face recognition) and extended applications in diverse settings

```

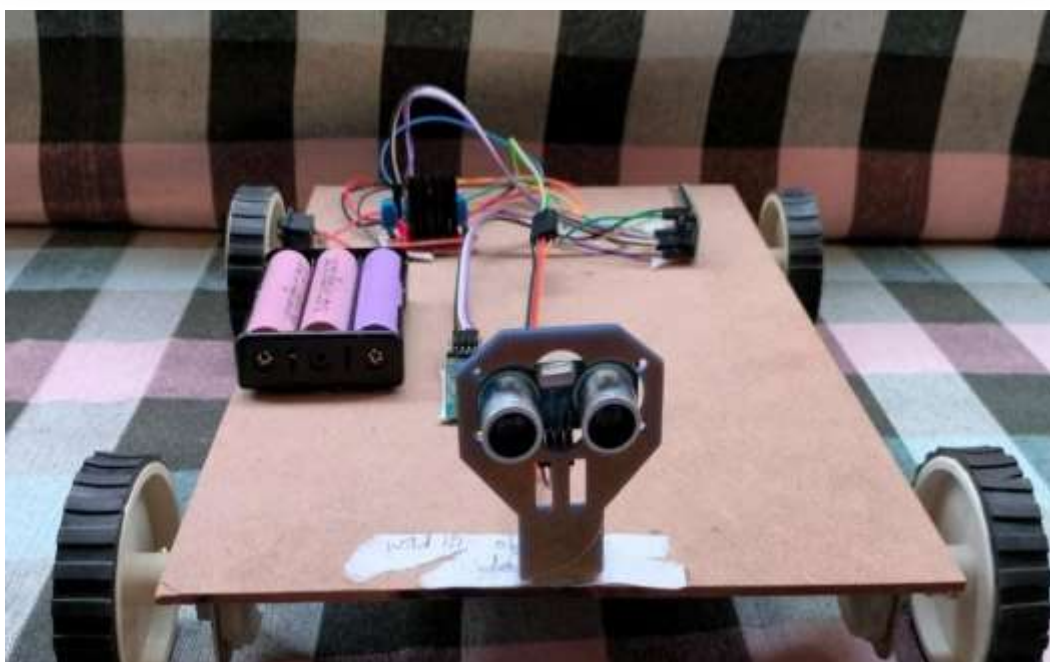
Blink | Arduino 1.8.5

Blink 5
This example code is in the public domain.
http://www.arduino.cc/en/Tutorial/Blink

// the setup function runs once when you press reset or power the board
void setup() {
  // initialize digital pin LED_BUILTIN as an output.
  pinMode(LED_BUILTIN, OUTPUT);
}

// the loop function runs over and over again forever
void loop() {
  digitalWrite(LED_BUILTIN, HIGH); // turn the LED on (HIGH is the voltage level)
  delay(1000); // wait for a second
  digitalWrite(LED_BUILTIN, LOW); // turn the LED off by making the voltage LOW
  delay(1000); // wait for a second
}

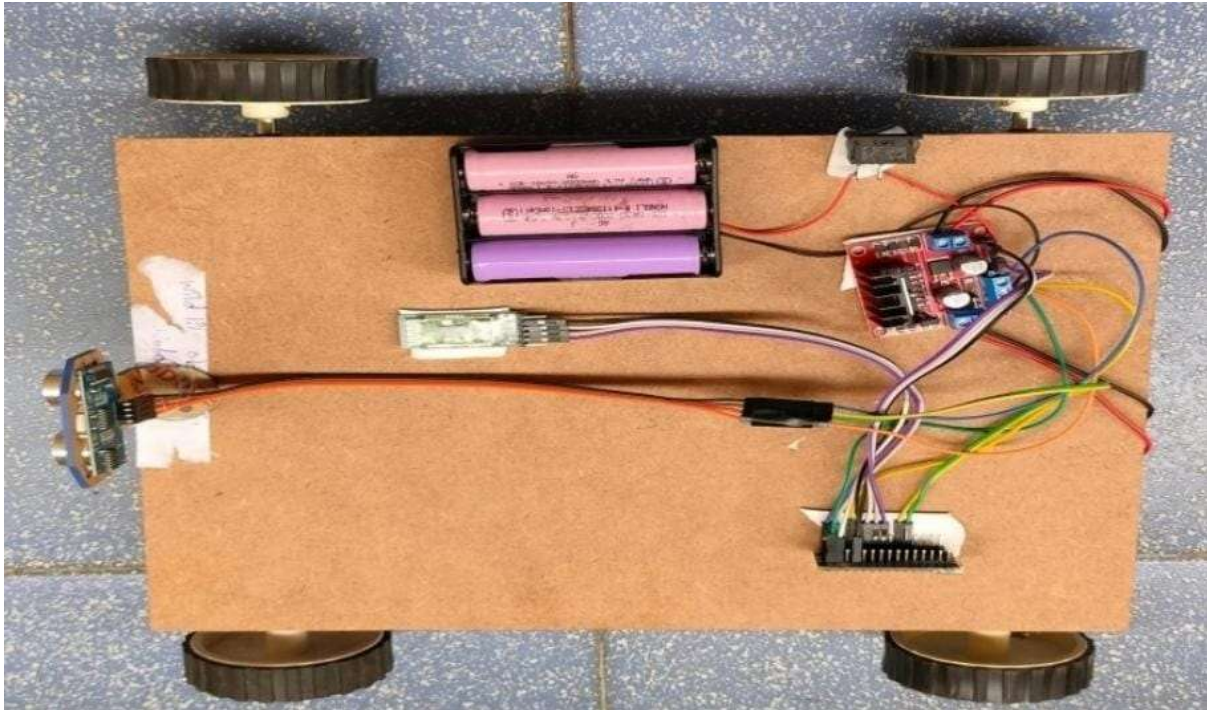
```





International Journal of Innovative Research in Computer and Communication Engineering (IJIRCCCE)

(A Monthly, Peer Reviewed, Refereed, Scholarly Indexed, Open Access Journal)



VI. CONCLUSION

In conclusion, the successful development and implementation of the VoiceDriven, Vision-Aware Smart Rover represent a significant stride toward the realization of intelligent, accessible, and adaptable robotic systems tailored for diverse real-world applications. This project has effectively integrated multiple cutting-edge technologies including voice recognition, computer vision, sensorbased autonomy, and wireless communication into a cohesive and functional platform that bridges the gap between human intention and robotic execution. The rover's core design prioritizes user-centric interaction through hands-free voice control, making it especially valuable in assistive contexts where individuals with physical disabilities can operate mobility aids or environmental assistants with unprecedented independence. The incorporation of real-time obstacle detection and traffic sign recognition not only enhances operational safety but also elevates the system's environmental awareness, enabling it to navigate complex and dynamic settings with confidence. Furthermore, the hybrid control architecture seamlessly blending manual voice commands with autonomous navigation ensures both flexibility and reliability, allowing the rover to adapt to varying user needs and situational demands. Beyond its technical achievements, this project underscores the broader societal and industrial relevance of voice-enabled robotics. In healthcare, the system can support patient care through voice-controlled delivery and monitoring. In industrial and logistics settings, it offers a scalable solution for warehouse automation, material handling, and inventory management, reducing manual labor and improving efficiency. In educational environments, the rover serves as an engaging, hands-on tool for teaching robotics, artificial intelligence, and embedded systems, fostering experiential learning and innovation among students

The system's cost-effectiveness, modularity, and scalability further enhance its practical utility. Built on widely available and open-source hardware, the platform is not only affordable but also extensible ready to integrate future enhancements such as IoT connectivity, advanced AI models, GPS navigation, or additional sensory modalities like gesture recognition. These attributes position the rover as a versatile foundation for continued research, development, and deployment across sectors including agriculture, disaster response, public safety, smart home automation, and beyond. Despite certain limitations such as dependence on ambient lighting for vision tasks and the operational range of Bluetooth communication the project demonstrates robust performance within defined parameters and offers clear pathways for iterative improvement. Each challenge encountered has provided valuable insights into system optimization, user interface design, and real-world deployment strategies. In summary, this project contributes a practical, innovative, and socially impactful robotic solution that aligns with contemporary advancements in automation, assistive technology, and human-robot interaction. It affirms the transformative potential of integrating



International Journal of Innovative Research in Computer and Communication Engineering (IJIRCCCE)

(A Monthly, Peer Reviewed, Refereed, Scholarly Indexed, Open Access Journal)

voice and vision into mobile robotics—not only as a technical exercise but as a meaningful step toward creating more inclusive, efficient, and intelligent systems. As robotics continues to evolve, platforms such as this will play an essential role in shaping a future where technology empowers individuals, enhances safety, and expands the boundaries of what is possible in automation across everyday life.

REFERENCES

1. J. C. Jones and A. Flynn, *Mobile Robots: Inspiration to Implementation*, 2nd ed., A K Peters, Wellesley, MA, USA, 1999.
2. R. Siegwart, I. R. Nourbakhsh, and D. Scaramuzza, *Introduction to Autonomous Mobile Robots*, 2nd ed., MIT Press, Cambridge, MA, USA, 2011.
3. S. Russell and P. Norvig, *Artificial Intelligence: A Modern Approach*, 4th ed., Pearson Education, 2021.
4. M. Quigley et al., “ROS: An open-source Robot Operating System,” in *Proc. IEEE Int. Conf. on Robotics and Automation Workshop*, Kobe, Japan, 2009.
5. K. Ogata, *Modern Control Engineering*, 5th ed., Prentice Hall, 2010.
6. P. Viola and M. Jones, “Rapid object detection using a boosted cascade of simple features,” *IEEE Computer Society Conference on Computer Vision and Pattern Recognition*, 2001.
7. HC-SR04 Ultrasonic Sensor Datasheet, Elecfreaks, 2018.
8. Arduino Nano Technical Specifications, Arduino Documentation, Arduino.cc.
9. ESP32-CAM Development Board Datasheet, Espressif Systems, 2020.
10. Google Speech Recognition API Documentation, Google Developers, 2023.
11. **Dr. Malatesh S. H.**, Yogith M, Vedamitra G M, and Sunil Bhandari R “**Autonomous Night Safety Patrolling Car,**” *International Journal of Innovative Research in Technology (IJIRT)*, vol. 11, no. 12, May 2025, ISSN: 2349-6002



INTERNATIONAL
STANDARD
SERIAL
NUMBER
INDIA



INTERNATIONAL JOURNAL OF INNOVATIVE RESEARCH

IN COMPUTER & COMMUNICATION ENGINEERING

 9940 572 462  6381 907 438  ijircce@gmail.com



www.ijircce.com

Scan to save the contact details